

INVESTIGATION AND DIAGNOSTIC POTENTIAL OF OFF-AXIS RESONANCE IN THz FREE-ELECTRON LASERS

Tong Li[†], Zhuoyuan Liu, Xiujie Deng[‡], Lixin Yan^{*}
Tsinghua University, Beijing, China

Abstract

We study undulator radiation observed away from the beam axis for terahertz (THz) free-electron laser (FEL) beams. Earlier work on a *single* short bunch relates the *continuous* off-axis spectrum to the longitudinal bunch profile without a discrete angular ‘resonance’ tied to micro-bunch harmonics. For a pre-bunched pulse-train beam, the bunching factor develops narrow spectral lines at the fundamental frequency and its integer harmonics. Off-axis phase matching selects a specific resonant polar angle for each line, producing pronounced, spatially separated ring-like intensity patterns in the coherent far field. We utilize the non-averaged 3D FEL code PUFFIN to simulate single-bunch radiation—reproducing non-integer harmonic patterns consistent with analytical Liénard-Wiechert (LW) results—and to demonstrate the expected off-axis resonance for pulse-train beams.

INTRODUCTION

Compact terahertz (THz) free-electron laser (FEL) sources driven by pre-bunched pulse-train electron beams are increasingly important for high-field spectroscopy and pump-probe experiments [1]. The reliable operation of these facilities necessitates accurate, preferably non-intercepting, longitudinal beam diagnostics. Conventional methods, such as coherent transition or diffraction radiation, are typically destructive or limited by the spectral response of the detection systems in the THz range.

Earlier studies by Neuman *et al.* [2] proposed that for a single short bunch, the continuous off-axis undulator spectrum encodes the longitudinal bunch profile. While providing a useful non-intercepting diagnostic, this single-bunch regime lacks the discrete phase-matching required for a sharp angular “resonance”. In contrast, a pulse-train beam introduces discrete micro-bunching frequencies. When these frequencies lock with the undulator harmonics at specific observation angles, they produce distinct, ring-like intensity patterns in the far field—a phenomenon we define here as off-axis resonance.

In this work, we employ the three-dimensional, non-averaged FEL code PUFFIN [3] to investigate these off-axis dynamics. We first validate our simulation approach by reproducing single-bunch radiation patterns, including non-integer harmonics, showing excellent agreement with analytical Liénard-Wiechert (LW) formulations. Subsequently, we demonstrate the emergence of the predicted off-axis resonance for pulse-train beams. These resonant rings provide a clear spatial signature of the beam’s

temporal micro-structure, offering a potential candidate for future online, non-destructive THz FEL diagnostics.

OFF-AXIS PHASE MATCHING AND PULSE-TRAIN RESONANCE

Undulator Tuning at Finite Angle

For an electron of Lorentz factor γ emitting at polar angle θ from the undulator axis, the fundamental resonance wavelength is

$$\lambda_r = \left(1 + \frac{K^2}{2} + \gamma^2 \theta^2\right) / 2\gamma^2 \cdot \lambda_u \quad (1)$$

The angular position at which the fundamental radiation frequency is red-shifted to $1/n$ of its on-axis value is therefore

$$\theta_{1/n} = \sqrt{[(n-1)(1 + K^2/2)]} / \gamma \quad (2)$$

Equations (1) and (2) describe standard undulator kinematics, defining the specific frequency emitted along a given ray. For a single short bunch, the radiated power versus frequency is weighted by a broad longitudinal form factor [1]; varying θ scans this continuous spectrum but does not create the sharp, ring-like resonant images that emerge when discrete micro-bunch lines must simultaneously satisfy Eq. (2).

Pulse-Train Micro-Bunching and Off-Axis Resonance

For a pre-bunched pulse-train beam, the longitudinal bunching factor $b(\omega)$ develops sharp peaks centered at the fundamental micro-bunching frequency and its integer harmonics. Each peak corresponds to a specific spatial harmonic of the beam’s longitudinal density. When one of these bunching peaks matches the red-shifted undulator frequency at a specific off-axis angle—as governed by the kinematic relation in Eq. (2)—the emission becomes phase-matched. Consequently, rather than a smooth filled cone of emission, the coherent far-field radiation intensity is significantly enhanced around this specific angle, manifesting as a pronounced ring. This spatial intensity contrast is the direct signature of off-axis resonance, a phenomenon intrinsically absent for an isolated single bunch lacking such periodic density modulation.

Away from axis one must retain the full three-dimensional bunching factor. When the particle beam is transverse-longitudinally uncoupled, it factorises according to

$$\rho(\theta, \varphi, \omega) = \rho_{\perp}(\theta, \varphi, \omega) \cdot \rho_z(\omega) \quad (3)$$

where $\rho_z(\omega)$ is the usual longitudinal form factor and the transverse bunching factor is the two-dimensional Fourier transform of the transverse density $\rho(x, y)$:

[†] lit22@mails.tsinghua.edu.cn

[‡] dengxiujie@mail.tsinghua.edu.cn

^{*} yanlx@mail.tsinghua.edu.cn

$$\rho_{\perp}(\theta, \varphi, \omega) = \int \int \rho(x, y) \exp(-i\omega(x \sin\theta \cos\varphi + y \sin\theta \sin\varphi)/c) dx dy \quad (4)$$

In the THz regime, the radiation wavelength λ is typically comparable to the transverse beam size. Consequently, the transverse bunching factor $\rho_{\perp} \approx 1$ over the relevant angular range, and the full 3D off-axis bunching spectrum is well approximated solely by the longitudinal form factor ρ_z .

PUFFIN SIMULATIONS

Standard period-averaged FEL codes cannot follow the non-integer harmonic content carried by a pulse-train beam. We therefore use PUFFIN, a three-dimensional, non-averaged time-domain FEL solver that resolves arbitrary radiation frequencies on a common mesh and treats the electron-field interaction self-consistently.

To exercise the three-dimensional field solver, we first reproduce transverse intensity maps for a single bunch at the 0.5th, 1st, and 1.8th harmonics, as shown in Fig. 1. These results show excellent agreement with the analytical Liénard-Wiechert (LW) formulations, accurately demonstrating how non-integer harmonic content is distributed in angle.

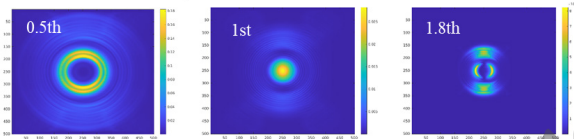


Figure 1: Single-bunch PUFFIN maps at the 0.5th, 1st and 1.8th harmonics (independent colour scales);

A pulse train with a 3 THz bunching frequency was then propagated through an undulator tuned to a fundamental on-axis resonance of 5 THz. The corresponding bunching-factor spectrum and the angle-integrated harmonic flux are illustrated in Fig. 2.

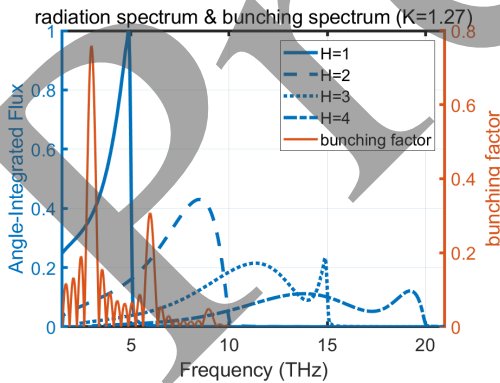


Figure 2: Pulse-train example ($K = 1.27$): angle-integrated harmonic flux ($H = 1-4$) and bunching-factor spectrum, with the 3 THz micro-bunch peak and the 5 THz fundamental resonance indicated.

Because the undulator resonance frequency red-shifts off-axis, it matches the 3 THz bunching peak at a specific observation angle. Consequently, the simulated frequency-filtered transverse intensity maps, presented in Fig. 3,

clearly reveal a pronounced resonant ring at this matching frequency of 3 THz, which is distinctly absent from the adjacent 2 THz and 4 THz filtered images.

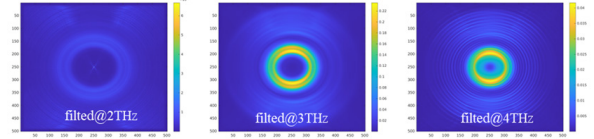


Figure 3: Frequency-filtered transverse intensity for an electron pulse train with 3 THz bunching, shown at 2 THz, 3 THz and 4 THz ($K = 1.27$).

CONCLUSION AND OUTLOOK

The central result of this study is that the off-axis resonance—manifesting as ring-like far-field radiation tied to discrete micro-bunching peaks—is intrinsic to pulse-train beams. This distinctly contrasts with isolated single bunches, where off-axis emission provides only a smooth, continuous spectrum for longitudinal diagnostics.

Furthermore, we established that in the THz regime, where the radiation wavelength is typically comparable to the transverse beam dimensions, the 3D off-axis emission is accurately described by the longitudinal bunching factor alone. Using the 3D FEL code PUFFIN, we successfully reproduced single-bunch harmonic maps consistent with analytical Liénard-Wiechert formulations and demonstrated the predicted pulse-train resonance—specifically, the formation of a pronounced 3 THz off-axis ring from a 5 THz on-axis undulator setup. Future work will involve further numerical investigations to design a comprehensive beam monitoring technology based on this off-axis resonance phenomenon.

ACKNOWLEDGEMENTS

This work is supported by the Beijing Outstanding Young Scientist Program (No. JWZQ20240101006), the National Key Research and Development Program of China (No. 2022YFA1603403), the National Natural Science Foundation of China (NSFC No. 12522512, 124B2104), Tsinghua University Dushi Program and Tsinghua High Performance Computing Center.

REFERENCES

- [1] Y. Liang, T. Li, J. Sun., *et al.*, “Superradiant terahertz free-electron laser driven by electron microbunch trains. *Light Sci Appl*, vol. 15, no. 60, 2026. doi:10.1038/s41377-025-02156-7
- [2] C. P. Neuman *et al.*, “Coherent off-axis undulator radiation from short electron bunches” *Phys. Rev. ST Accel. Beams*, vol 3, p. 030701, March, 2000. doi:0.1103/PhysRevSTAB.3.030701
- [3] L. T. Campbell *et al.*, “A three dimensional, unaveraged free electron laser simulation code”, *Phys. Plasmas*, vol. 19, p. 093119, Sep, 2012. doi:10.1063/1.4752743