

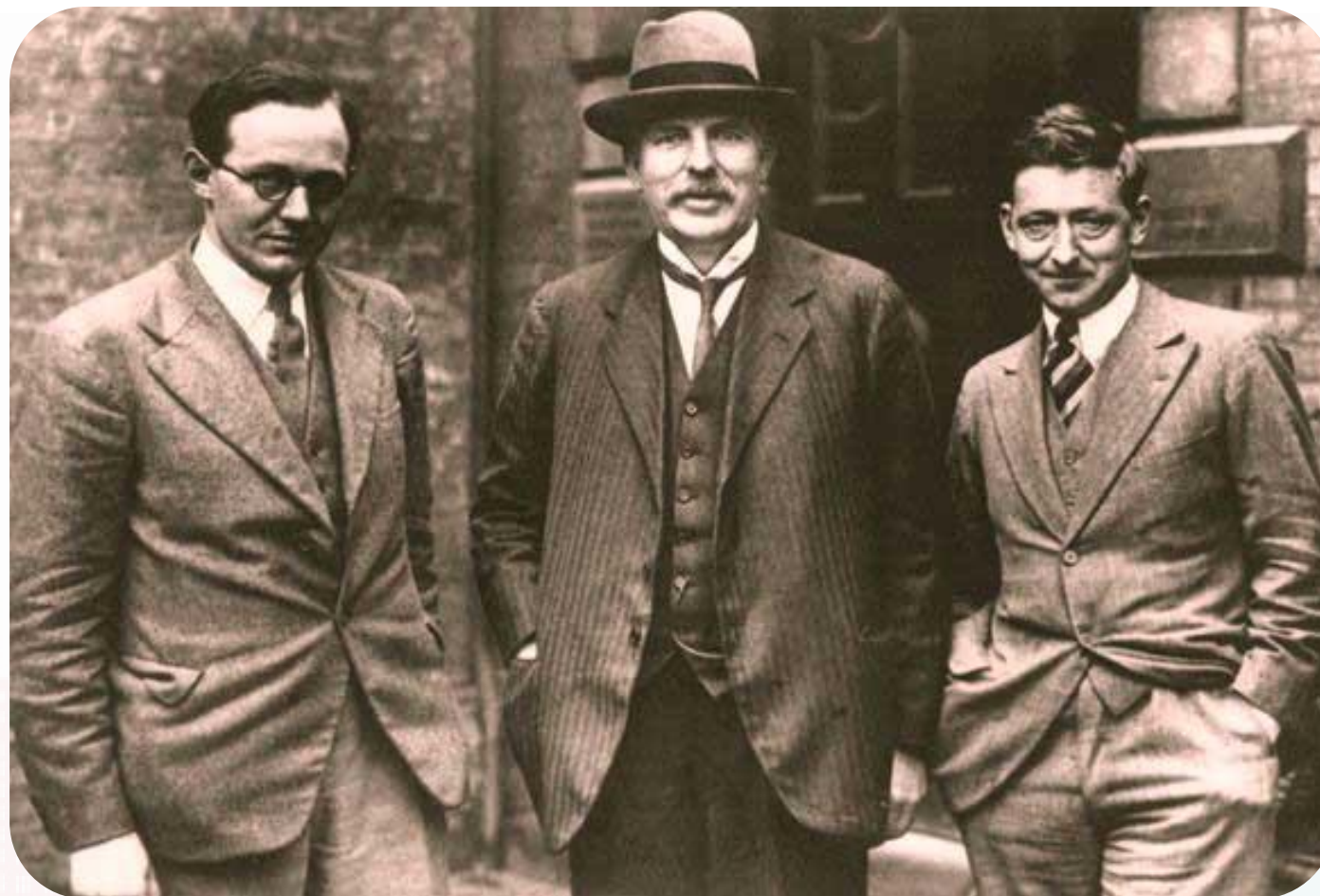
# IBIC 2025

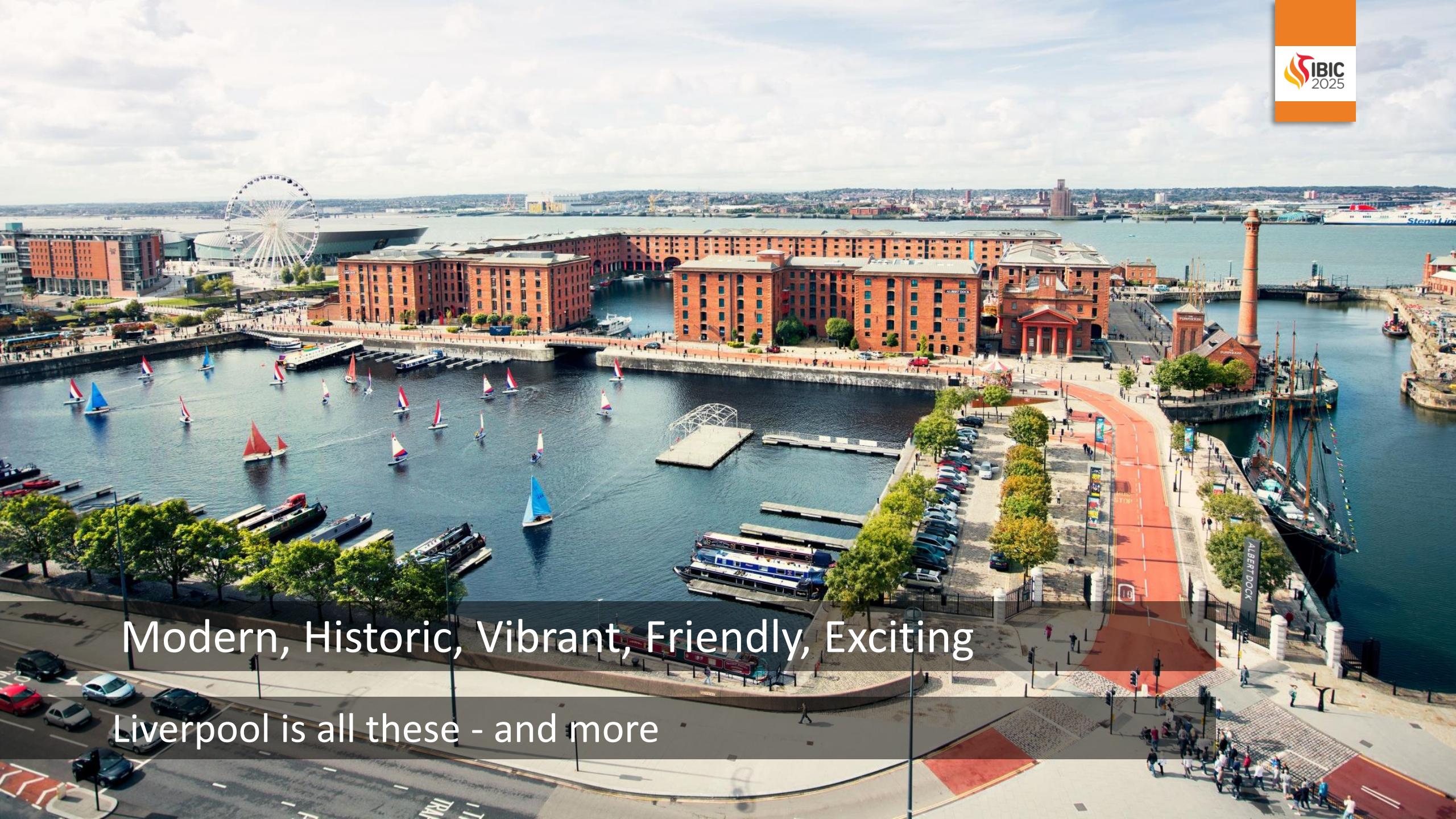
## Liverpool, UK

Carsten P Welsch



# Accelerators are coming home





Modern, Historic, Vibrant, Friendly, Exciting

Liverpool is all these - and more

A wide-angle photograph of the Liverpool waterfront on a clear, sunny day. The scene is dominated by the grand, classical architecture of the Liverpool City Hall, featuring a large central dome and multiple stories of windows. To the left, the Royal Liver Building's iconic clock tower stands prominently. In the foreground, a modern stone and metal walkway runs along the water's edge, with many people walking and sitting on benches. Young trees are planted along the promenade. The sky is a clear, bright blue.

World-famous Waterfront

Liverpool can be explored by foot

A photograph of a waterfront promenade at Albert Dock. The foreground shows a paved walkway with a decorative pattern of interlocking circles. A black metal railing with three strands of heavy chain runs along the edge of the walkway. In the background, a large, multi-story brick building with many windows is visible across a body of water. A small boat is docked on the right, and a seagull is flying in the clear blue sky. A large orange pillar is visible on the left side of the frame.

# Beyond the Conference

Albert Dock



Beyond the Conference  
Culture





Beyond the Conference

Music and Entertainment

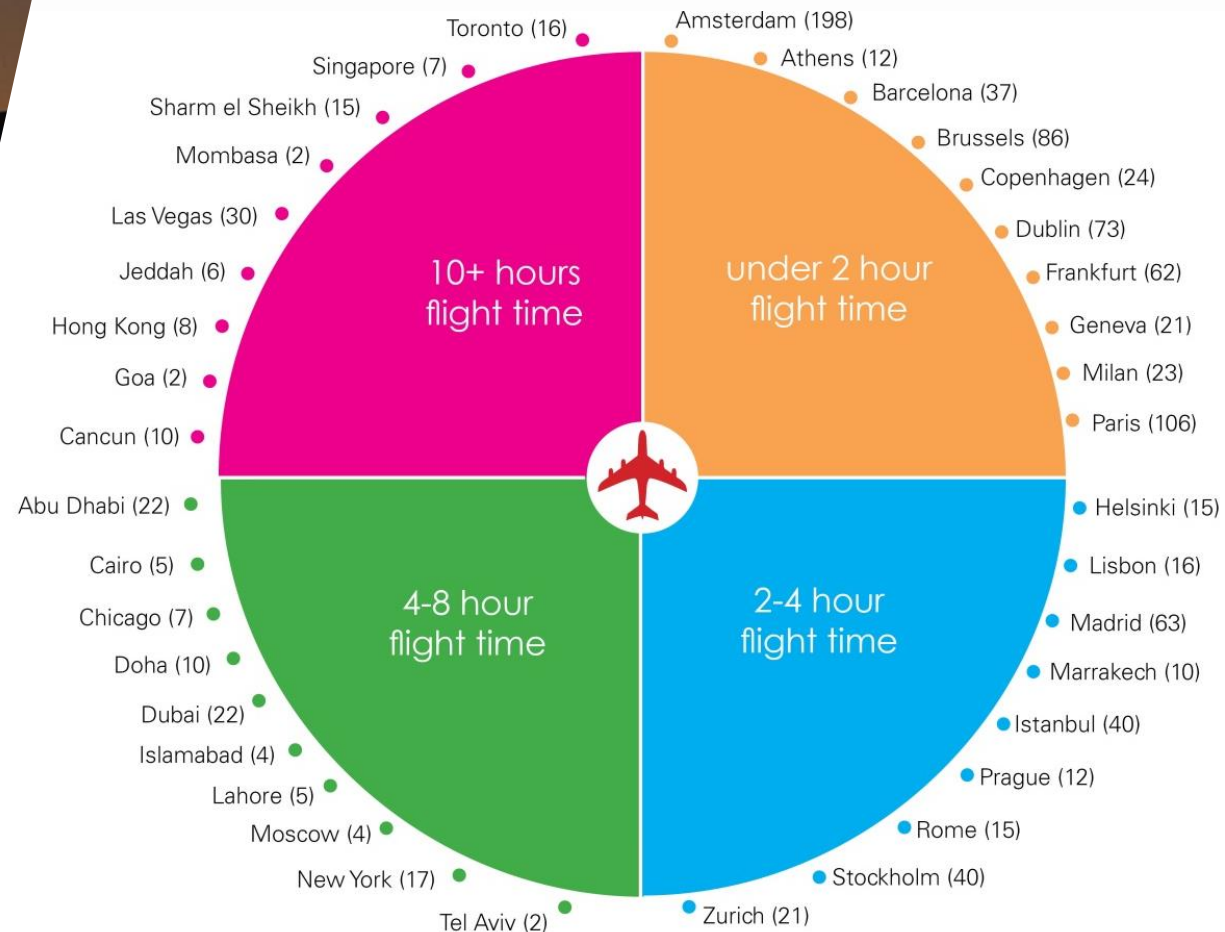


A silhouette of a large commercial airplane in flight, viewed from below, against a bright orange sunset sky. The aircraft's wings, engines, and landing gear are clearly visible. In the foreground, the silhouettes of airport ground support equipment, including tall masts with lights, are visible.

Travelling to Liverpool

Connected to the World

# Travelling to Liverpool





- KEY
- 00 Hotels
  - 00 Serviced Apartments
  - Merseyrail
  - National Rail
  - Bus Station

Accommodation

1,000s of rooms readily accessible

# Exploring the UK

## ✓ Liverpool

- Lake District
  - Chester
  - Scottish Highlands
  - Edinburgh
  - York
  - North Wales and Snowdonia
- ...and much, much more...

## ✓ London

- in less than 2 hours




# Hosting Institutions



Science and  
Technology  
Facilities Council

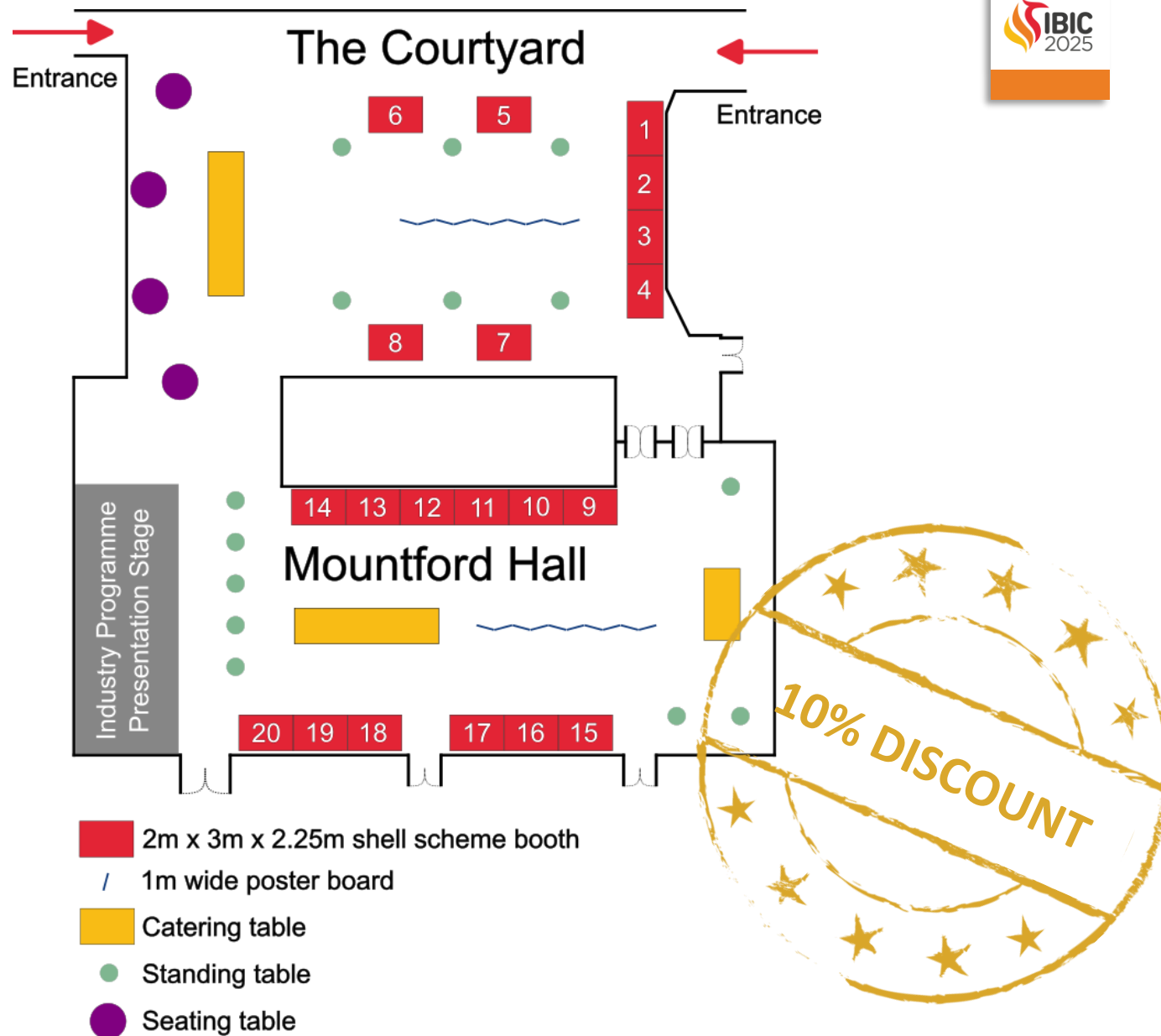


A wide-angle photograph of the University of Liverpool's main building, a large red-brick Gothic Revival structure with a prominent clock tower and spire. The building is set against a clear blue sky. In the foreground, a paved plaza is filled with people walking, some carrying backpacks. To the left, a modern glass-fronted building is partially visible. The scene is brightly lit, suggesting a clear day.

# The Venue

## University of Liverpool

# Industry Exhibition and Poster Session





# *instruments*



## Aim and Scope

*Instruments* (ISSN: 2410-390X) is an international, peer-reviewed open-access journal that provides an advanced forum for studies related to the design and applications of instruments, apparatuses, and experimental techniques in disciplinary and interdisciplinary research.

## Editor-in-Chief



**Prof. Dr. Antonio Ereditato**  
Enrico Fermi Institute, The University of  
Chicago, Chicago, IL 60637, USA

## Author Benefits

**Open Access** Unlimited and free access for readers

**No Copyright Constraints Retain** copyright of your work and make free use of your article

**No Space Constraints, No Extra Space or Color Charges** No restriction on the length of the papers, number of figures or colors

**21.5** days

**Submission to First Decision**  
(median values for papers published in this journal in the second half of 2023)

**5.4** days

**Acceptance to Publication**  
(median values for papers published in this journal in the second half of 2023)



*Instruments* Editorial Office  
St. Alban-Anlage 66  
4052, Basel, Switzerland

✉ [instruments@mdpi.com](mailto:instruments@mdpi.com)  
▶ [www.mdpi.com/journal/instruments](http://www.mdpi.com/journal/instruments)  
🐦 @MDPIOpenAccess







Social Program

Blending historic elegance with charming, modern flair

